

ROUND 2



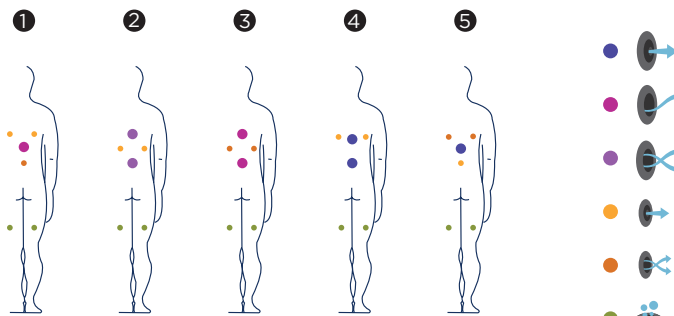
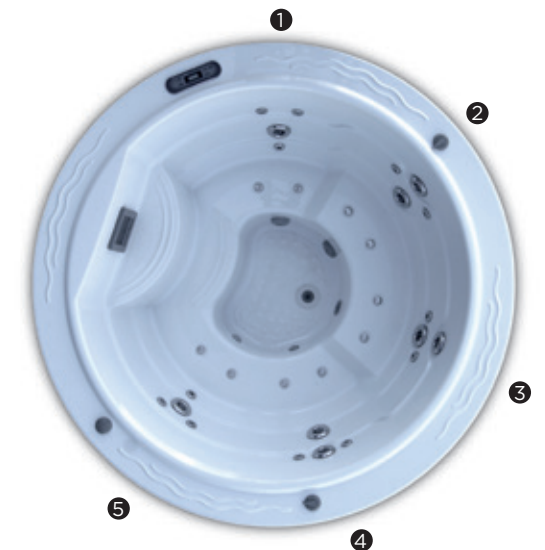
Following the same line of design as the Kish spa, the Round 2 spa has become the ideal choice for small spaces. Designed for installation as an in-ground spa and with an acrylic finish shell, it has four totally equipped seats in which a full massage circuit can be enjoyed.

Positions: 5

Measures: Ø 205

Acrylic finish

Filtration system: DIGITAL KIT, 41993





ref. 49859

Technical specifications

Measures (±2cm)	Ø 205
Positions (seats/loungers)	5 (5 /-)
Water capacity (l)	680
Weight (empty / full) (kg)	260 / 1.240

Shell finish	Acrylic
Colours available	44 / 27 / 72 / 59 / 18 / 64 / 46

FEATURES	
Total Massage Points	30
High pressure micro-massage	10
Circular anti-stress massage	2
Circular drainage massage	8
Reflex foot massage	-
Neck massage	-
Intensive treatment lounger jets	-
Relax Impact System nozzles	10
Waterfall	-
Water fountains	-
Stainless steel nozzles	•
Headrests	-
Digital Control Panel	•
Galvanised metal structure	•
Chromotherapy LED spotlight	1 LED
Isolating cover	Optional
EcoSpa	-

RECOMMENDED EXTERNAL EQUIPMENT	
Compact Kit	Digital Kit



Digital Kit
41993

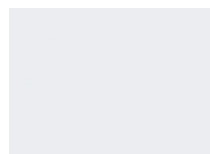
COMPACT KITS

EQUIPMENT	
Filter	Ø 500
Filtration pump	0,6 KW
Massage Pump	1,8 KW
Air blower	0,9 KW
Standard heater power	3 KW
Ozonator	Optional
Buttons / Control	Digital Panel

INSTALLATION	
Power requirement (W)	6.800 W
Power requirement (A)	27,6 A
Voltage	230 V / 400 V III

Shell finishes

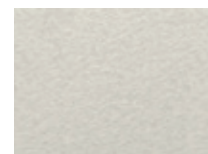
Acrylic colors



44 White



27 Winter Solstice



72 Pearl Cameo



59 Sterling



18 Sand



64 Pearl Shadow



46 Blue Marble

Accessories



Digital Kit - 41993



Rail for getting in and out of in-ground spas

According to our policy of constant evolution, we reserve the right to modify the specifications in part or in whole without forewarning.

ROUND 2



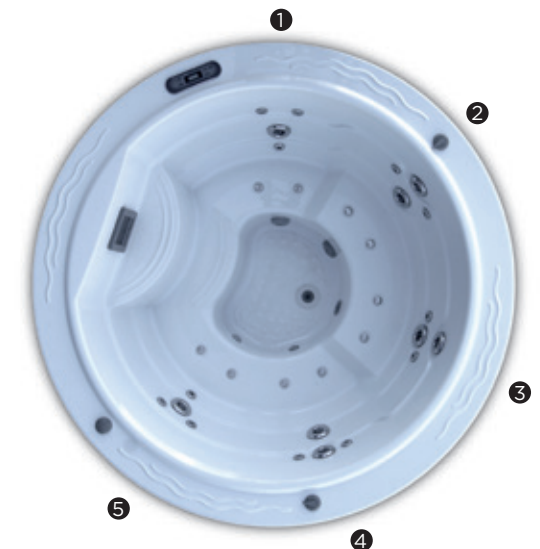
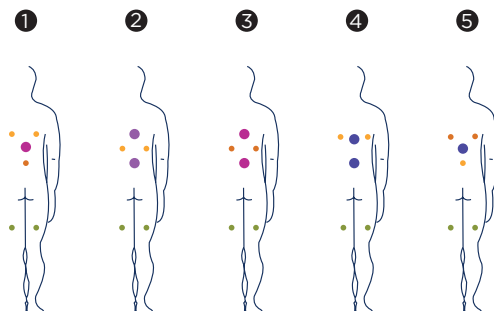
En suivant la même ligne esthétique du Spa Kish, le Spa Round 2 devient le choix idéal pour couvrir des espaces réduits. Conçu pour être encastré et avec un bassin en acrylique, il dispose de 4 positions totalement équipées, dans lesquelles il est possible de réaliser un circuit complet d'hydromassage.

Positions: 5

Dimensions: Ø 205

Finition en acrylique

Équipement de filtration: KIT DIGITAL, 41993





ref. 49859

Caractéristiques techniques

Dimensions (±2cm)	Ø 205
Positions (assises / allongées)	5 (5 /-)
Volume Eau (l)	680
Poids (vide / plein) (kg)	260 / 1.240

Type Finition Coque	Acrylique
Couleurs Disponible	44 / 27 / 72 / 59 / 18 / 64 / 46

PRESTATIONS	
Total Points de Massage	30
Micro Massage Localisé Pression	10
Massage Rotatif Anti-tension	2
Massage Rotatif Drainage	8
Massage Pieds Reflexo	-
Massage Cervical	-
Jets Chaise-Longue Intensive Treatment	-
Buses Relax Impact System	10
Cascades Eau	-
Water fountains	-
Jets/Buses Inoxydable	•
Appuie-tête	-
Panneau de Commande Numérique	•
Structure Métal Galvanisé	•
Chromothérapie Ampoule LED	1 LED
Couverture isotherme	Option
EcoSpa	-

ÉQUIPEMENT EXTERNE RECOMMANDÉ	
Kit Compact	Kit Digital



Kit Digital
41993

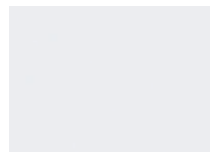
KIT COMPACT

ÉQUIPEMENT	
Filtre	Ø 500
Pompe de filtration	0,6 KW
Pompes de massage	1,8 KW
Blower	0,9 KW
Réchauffeur électrique	3 KW
Ozonnateur	Option
Bouton - Poussoirs / Contrôle	Panneau digitale

INSTALLATION	
Puissance maximale (W)	6.800 W
Puissance requise (A) à 230 V	27,6 A
Tension	230 V / 400 V III

Matériel des Spas

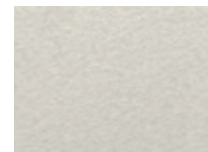
Couleurs Acrylique



44 Blanc



27 Winter Solstice



72 Perla Cameo



59 Sterling



18 Sand



64 Pearl Shadow



46 Bleu Marble

Accessories



Kit Digital - 41993



*Barre d'accès
au spa encastré.*

Dans le cadre de notre politique d'améliorations constantes, nous nous réservons le droit de modifier/d'amender nos spécifications n'importe quand et sans aucun préavis.

ROUND 2



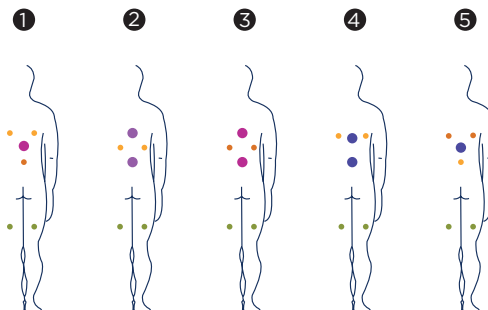
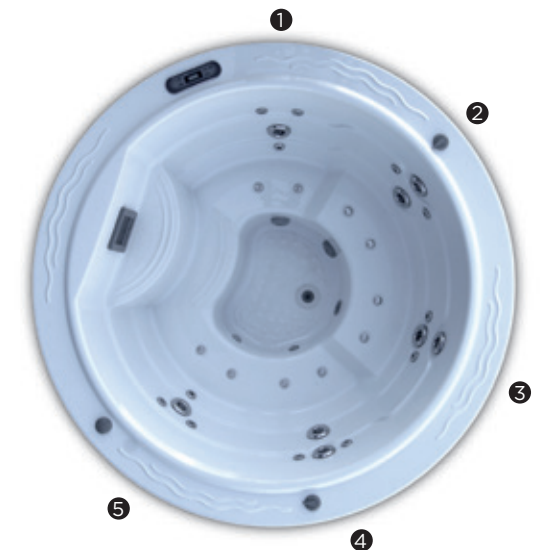
Dieses runde Modell weist ideale Abmessungen auf, wenn nur wenig Raum zur Verfügung steht. Die Ausführungen der Verkleidung in Mosaik sind außergewöhnlich, und die 20 Massagejets bieten zusammen mit den 8 Luftinjektoren eine personalisierte Massage in jeder der Positionen.

Positionen: 4

Dimensionen: Ø 205

Ausführung in Mosaik

Filtergerät: KIT DIGITAL, 41993





ref. 49859

Ausstattung

Dimensionen (±2cm)	Ø 205
Positionen (seats/loungers)	5 (5 /-)
Wasservolumen (l)	680
Gewicht (leer/befüllt) (kg)	260 / 1.240

Ausführungstyp Becken	Acryl
Verfügbare Farben	44 / 27 / 72 / 59 / 18 / 64 / 46

LEISTUNGEN	
Massagepunkte gesamt	30
Örtliche Druck-Mikromassage	10
Kreisende spannungslösende Massage	2
Kreisende Drainage-Massage	8
Fußreflexmassage	-
Halswirbelmassage	-
Jets Liege Intensive Treatment	-
Düsen Relax Impact System	10
Wasserfälle	-
Wasserquellen	-
Düsen Edelstahl	•
Kopfstützen	-
Digitales Bedienfeld	•
Verzinkter Metallrahmen	•
Farbtherapie LED-Strahler	1 LED
Thermocover	Option
EcoSpa	-

EMPFOHLENES EXTERNES GERÄT	
Kompakt Kit	Kit Digital



Kit Digital
41993

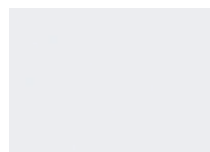
EMPFOHLENES TECHNIKPAKET

AUSSTATTUNG	
Filter	Ø 500
Zirkulationspumpe	0,6 KW
Massagepumpe	1,8 KW
Gebälse	0,9 KW
Elektrowärmetauscher	3 KW
Ozonanlage	Option
Steuerung	Digitale Steuerung

INSTALLATION	
Benötigte Gesamtleistung (W)	6.800 W
Benötigte Gesamtleistung (A) a 230 V	27,6 A
Stromspannung	230 V / 400 V III

Ausführungstyp Becken

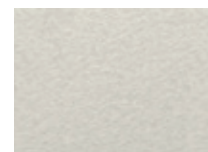
Acrylfarben



44 Weiß



27 Winter Solstice



72 Pearl Cameo



59 Sterling



18 Sand



64 Pearl Shadow



46 Helles Blau
Marmoriert

Zubehör



Kit Digital - 41993



*Eingebaute Stange
für den Zugang zum Spa*

Im Rahmen unserer Bemühungen um ständige Verbesserungen behalten wir uns das Recht vor, ohne weitere Bekanntmachungen Änderungen an der Konstruktion und den technischen Daten vorzunehmen.

ROUND 2



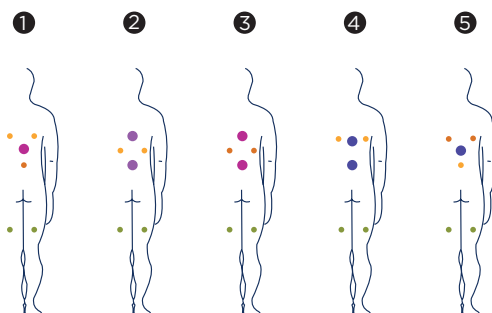
Se trata de un modelo circular con unas dimensiones ideales para espacios reducidos. Los acabados del casco con mosaico son excepcionales y sus 20 jets de masaje, junto con los 8 inyectores de aire, ofrecen un masaje personalizado en cada una de sus posiciones.

Posiciones: 4

Medidas: Ø 205

Acabado en mosaico

Equipo de filtración: KIT DIGITAL, 41993





ref. 49859

Características técnicas

Medidas (±2cm)	Ø 205
Posiciones (sentado / tumbado)	5 (5 /-)
Volumen Agua (l)	680
Peso (vacío / lleno) (kg)	260 / 1.240

Tipo Acabado Casco	Acrílico
Colores Disponibles	44 / 27 / 72 / 59 / 18 / 64 / 46

PRESTACIONES	
Total Puntos de Masaje	30
Micro Masaje Localizado Presión	10
Masaje Rotativo Antitensión	2
Masaje Rotativo Drenaje	8
Masaje Pies Reflexo	-
Masaje Cervical	-
Jets Tumbona Intensive Treatment	-
Boquillas Relax Impact System	10
Cascadas Agua	-
Fuentes de agua	-
Jets/Boquillas inoxidable	•
Reposacabezas	-
Panel de Control Digital	•
Estructura Metálica Galvanizada	•
Cromoterapia Foco LED	1 LED
Cubierta Isotermica	Opcional
EcoSpa	-

EQUIPO EXTERNO RECOMENDADO	
Kit Compacto	Kit Digital



Kit Digital
41993

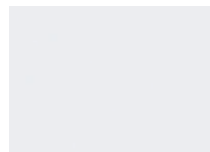
KIT COMPACTO

EQUIPAMIENTO	
Filtro	Ø 500
Bomba Filtración	0,6 KW
Bombas Masaje	1,8 KW
Bomba Soplante	0,9 KW
Calefacción	3 KW
Ozonizador	Opcional
Pulsadores / Control	Panel Digital

INSTALACIÓN	
Potencia requerida (W)	6,800 W
Potencia requerida (A) a 230 V	27,6 A
Voltaje	230 V / 400 V III

Acabados Casco

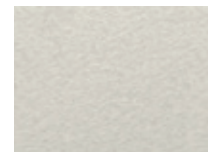
Colores Acrílico



44 Blanco



27 Winter Solstice



72 Perla Cameo



59 Sterling



18 Sand



64 Pearl Shadow



46 Blue Marble

Accesorios



Kit Digital - 41993



*Barra de acceso
al Spa empotrado*

Como parte de nuestra política de mejoramiento continuo, nos reservamos el derecho de modificar el diseño y/o especificaciones sin previo aviso.

ROUND 2



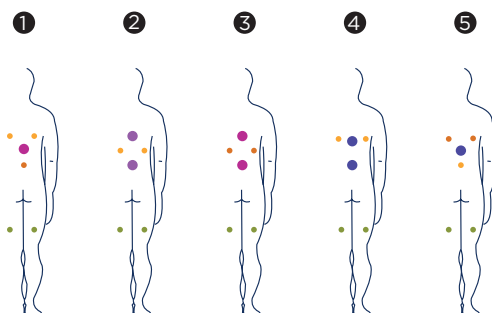
Si tratta di un modello circolare dalle dimensioni ideali per spazi ridotti. Le finiture a mosaico della struttura sono eccezionali e i suoi 20 jet di massaggio, insieme agli 8 iniettori d'aria, offrono un massaggio personalizzato in ciascuna delle sue posizioni.

Posizioni: 4

Misure: Ø 205

Finitura con mosaico

Gruppo di filtraggio: KIT DIGITAL, 41993



Caratteristiche



ref. 49859

Misure (±2 cm)	Ø 205
Posizioni (seduto / sdraiato)	5 (5 /-)
Volume acqua (l)	680
Peso (vuota/piena) (kg)	260 / 1.240

Tipo finitura struttura	Acrilico
Colori disponibili	44 / 27 / 72 / 59 / 18 / 64 / 46

PRESTAZIONI	
Totale punti di massaggio	30
Micro massaggio localizzato a pressione	10
Massaggio rotativo antitensione	2
Massaggio rotativo drenante	8
Massaggio ai piedi Reflexo	-
Massaggio cervicale	-
Jet lettino Intensive Treatment	-
Bocchette Relax Impact System	10
Cascate d'acqua	-
Fontane d'acqua	-
Jet/Bocchette Inossidabile	•
Poggiatesta	-
Pannello di controllo digitale	•
Struttura metallica galvanizzata	•
Cromoterapia luce LED	1 LED
Copertura isotermica	Opzionale
EcoSpa	-

EQUIPAGGIAMENTO ESTERNO RACCOMANDATO	
Kit Compatto	Kit Digital



Digital Kit
41993

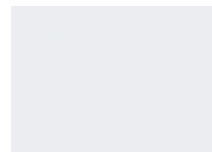
KIT COMPATTO

EQUIPAGGIAMENTO	
Filtro	Ø 500
Pompa di filtraggio	0,6 KW
Pompe per massaggio	1,8 KW
Pompa di mandata	0,9 KW
Riscaldamento	3 KW
Ozonizzatore	Opzionale
Pulsanti / Controllo	Pannello digitale

INSTALLAZIONE	
Potenza necessaria (W)	6.800 W
Potenza necessaria (A) a 230 V	27,6 A
Tensione	230 V / 400 V III

Materiale Vasca

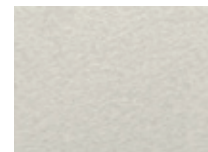
Colori superficie acrilica



44 White



27 Winter Solstice



72 Pearl Cameo



59 Sterling



18 Sand



64 Pearl Shadow



46 Blue Marble

Accessori



Kit Digital - 41993



*Barra di accesso
alla spa incassata*

Fedeli alla nostra politica di continuo miglioramento, ci riserviamo il diritto di modificare il design e/o le specifiche senza preavviso.

ROUND 2



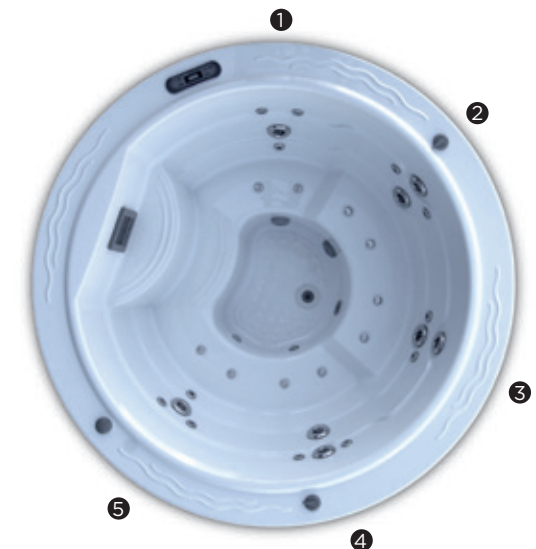
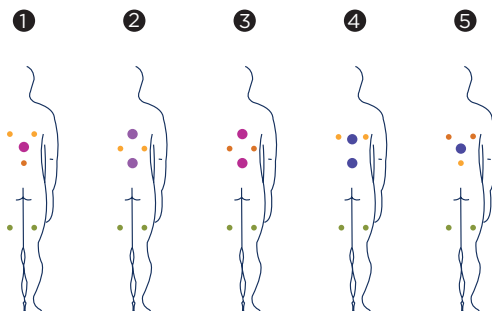
De Round 2-spa, met een gelijkaardig ontwerp als de Kish-spa, is ideaal voor kleine ruimtes. Hij is ontworpen als inbouwspa met een acrylafwerking en biedt vier volledig uitgeruste zitplaatsen waarin u kunt genieten van een volledig massagecircuit.

Posities: 5

Afmetingen: Ø 205

Acrylafwerking

Filtersysteem: DIGITAL-KIT, 41993





ref. 49859

Technische eigenschappen

Afmetingen (± 2 cm)	Ø 205
Posities (zit-/ligplaatsen)	5 (5 /-)
Watervolume (L)	680
Gewicht (leeg/vol) (kg)	260 / 1.240

Afwerking	Acryl
Verkrijgbare kleuren*	44 / 27 / 72 / 59 / 18 / 64 / 46

KENMERKEN	
Aantal massagepunten	30
Micromassage met hoge druk	10
Cirkelvormige anti-stressmassage	2
Cirkelvormige drainagemassage	8
Voetreflexmassage	-
Nekmassage	-
Ligplaatsjets voor intensieve behandeling	-
Relax Impact System-injectoren	10
Waterval	-
Waterfonteinen	-
Roestvrijstalen injectoren	•
Hoofsteunen	-
Digitaal bedieningspaneel	•
Structuur in gegalvaniseerd metaal	•
LED-spotlight voor lichtbehandelingstherapie	1 LED
Isolerende afdekking	Optioneel
EcoSpa	-

AANBEVOLEN EXTERNE UITRUSTING	
Compact-kit	Digital-kit



Digital-Kit
41993

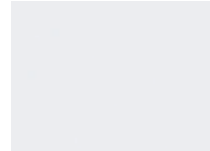
COMPACT-KITS

UITRUSTING	
Filter	Ø 500
Filtratiepomp	0,6 KW
Massagepomp	1,8 KW
Luchtblazer	0,9 KW
Standaardvermogen boiler	3 KW
Ozonator	Optioneel
Knoppen / Bediening	Digitaal paneel

INSTALLATIE	
Vereist vermogen (W)	6.800 W
Vereist vermogen (A)	27,6 A
Spanning	230 V / 400 V III

Afwerking

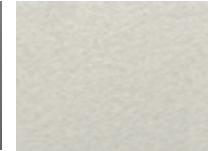
Barva Akrylu



44 White



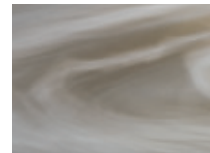
27 Winter Solstice



72 Pearl Cameo



59 Sterling



18 Sand



64 Pearl Shadow



46 Blue Marble

Accessoires



Digital Kit - 41993



Handrail om in en uit de inbouwspa te stappen

Overeenkomstig ons beleid van voortdurende ontwikkeling behouden wij ons het recht voor om de specificaties geheel of gedeeltelijk te wijzigen zonder voorafgaande kennisgeving.

ROUND 2

AQUAVIA
SPA



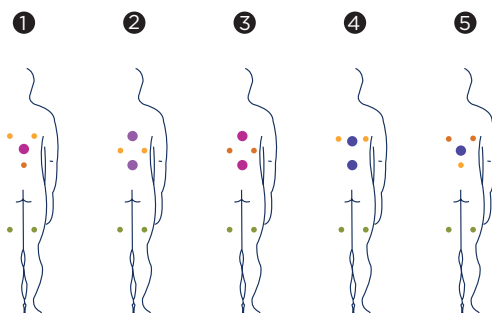
V návaznosti ve stejné linii designu jako model Kish je model Round 2. Vana se stala ideální volbou pro malé prostory jakožto zabudovaná vířivka s akrylovou povrchovou úpravou skořepiny a čtyř zcela vybavených sedaček pro příjemnou relaxaci.

Pozice: 5 

Rozměry: Ø 205

Akrylový povrch

Filtrační systém: DIGITAL KIT, 41993





ref. 49859

Technická Specifikace

Rozměry (±2cm)	Ø 205
Pozice (sedačky/lehátka)	5 (5 /-)
Vodní Kapacita (l)	680
Váha (Prázdňá/Plná) (kg)	260 / 1.240

Obložení	Akrylový
Barva Akrylu	44 / 27 / 72 / 59 / 18 / 64 / 46

VÝBAVA	
Celkový počet trysek	30
Přímé Trysky	10
Antistresové Rotační	2
Rotační trysky	8
Trysky pro masáž nohou	-
Krční trysky	-
Lehátkové trysky	-
Vzduchové trysky	10
Vodopád	-
Vodní fontánky	-
Nerezové Provedení	•
Opěrky	-
Digitální Ovládací Panel	•
Pozinkovaná Konstrukce	•
Chromoterapie	1 LED
Termokryt	Volitelné
EcoSpa	-

RECOMMENDED EXTERNAL EQUIPMENT	
Compact Kit	Kit Digital



Digital Kit
41993

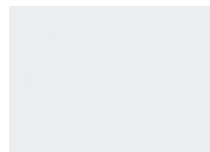
SESTAVA

EQUIPMENT	
Filtr	Ø 500
Filtrační čerpadlo	0,6 KW
Masážní čerpadlo	1,8 KW
Výkon ohřevu	0,9 KW
Standardní Topný výkon ozonizátoru Tlačítka	3 KW
Ozonátor	Optional
Tlačítka	Digital Panel

INSTALACE	
Příkon (W)	6,800 W
Příkon (A)	27,6 A
Připojení	230 V / 400 V III

Provedení Skořepiny

Barva Akrylu



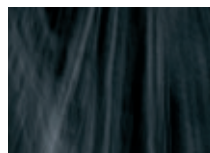
44 White



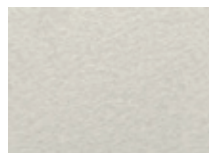
46 Blue Marble



59 Sterling



64 Pearl Shadow



72 Pearl Cameo

Doplňky



Digital Kit - 41993



*Madlo Pro Vstup A Výstup
K Zabudované Vaně*

V souladu s naší politikou neustálého vývoje si vyhrazujeme právo změnit specifikace bez předchozího upozornění.