

Technical specifications



ref: 69122

Measures (±2cm)	216 x 216 x 90
Positions (seats/loungers)	5 (3 / 2)
Water capacity (l)	930
Weight (empty / full) (kg)	327 / 1,257

Cabinet coating	Graphite Woodermax / Thunder Woodermax / Walnut Woodermax / Butterfly Woodermax
Without cabinet	Optional
Acrylic colours*	44 / 27 / 72 / 59 / 18 / 64

FEATURES	
Total massage points	44
Massage Jets	32
Air Nozzles	12
Waterfall	-
Headrests	3
Digital Control Panel	•
Clean Water System	•
Galvanised metal structure	•
ABS base	•
Energy Saving Cover	•
EcoSpa	Optional
Nordic Insulation System	Optional

FINISHES	
2 LED spotlights	Optional
1 LED spotlight	•
Bluetooth Sound	Optional
Stainless steel nozzles	•
Programmable WiFi Touch Panel	Optional

MESSAGE PUMPS	
Water massage	1 x 1.800 W / 2,5 HP
Relax Impact Pump	400 W

FILTRATION AND HEATING	
Recirculation pump	250 W
Water heater	3.000 W
Type of filter	Cartridge

POWER SUPPLY	
Power requirement LOW AMP (W) / (A) to 230 V	3.400 W / 14,8 A
Voltage	230 V / 400 V III

Shell finishes

Acrylic colors



44 White

27 Silver

72 Cameo

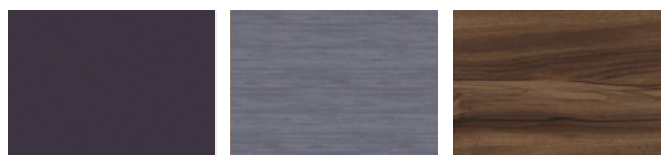


59 Sterling

18 Sand

64 Pearl Shadow

Furniture finishes



Graphite

Thunder

Walnut



Butterfly

Accessories



*WALNUT step
(or GRAPHITE model)*



Water care

According to our policy of constant evolution, we reserve the right to modify the specifications in part or in whole without forewarning.

Caractéristiques techniques



ref: 69122

Dimensions (±2cm)	216 x 216 x 90
Positions (assises / allongées)	5 (3 / 2)
Volume Eau (l)	930
Poids (vide / plein) (kg)	327 / 1257

Type finition habillage	Graphite Woodermax / Thunder Woodermax / Walnut Woodermax / Butterfly Woodermax
Sans habillage	Option
Couleurs Disponible*	44 / 27 / 72 / 59 / 18 / 64

PRESTATIONS	
Total Points de Massage	44
Jets massage	32
Buse air	12
Cascades Eau	-
Appuie-tête	3
Panneau de Commande Numérique	•
Clean Water System	•
Structure Métal Galvanisé	•
Base ABS	•
Energy Saving Cover	•
EcoSpa	Option
Nordic Insulation System	Option

FINITIONS	
2 Ampoules LED	Option
1 Ampoule LED	•
Bluetooth Audio	Option
Buses Inoxydable	•
Touch Panel Programable Wifi	Option

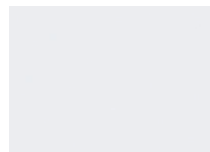
POMPES DE MASSAGE	
Massage d'Eau	1 x 1.800 W / 2,5 CV
Relax Impact Pump	400 W

FILTRATION ET CHAUFFAGE	
Pompe de recirculation	250 W
Chauffage d'eau	3.000 W
Type de filtre	Cartouche

COURANT ÉLECTRIQUE	
Puissance maximale LOW AMP (W) / (A) 230 V	3.400 W / 14,8 A
Tension	230 V / 400 V III

Matériel des Spas

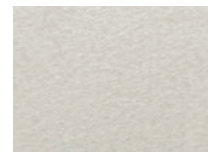
Couleurs Acrylique



44 White



27 Silver



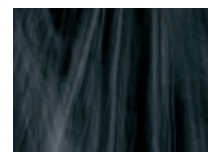
72 Cameo



59 Sterling



18 Sand

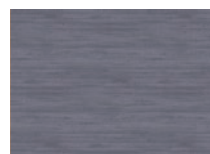


64 Pearl Shadow

Bois des Spas



Graphite



Thunder



Walnut



Butterfly

Accessories SPA



Escalier NOYER
(ou GRAPHITE modèle)



Kit de désinfection

Dans le cadre de notre politique d'améliorations constantes, nous nous réservons le droit de modifier/d'amender nos spécifications n'importe quand et sans aucun préavis.

Ausstattung



ref: 69122

Abmasse (±2cm)	216 x 216 x 90
Positionen (sitze/ liege)	5 (3 / 2)
Volumen (l)	930
Gewicht (leer/befüllt) (kg)	327 / 1.257

Verkleidung	Graphite Woodermax / Thunder Woodermax /Walnut Woodermax / Butterfly Woodermax
Ohne Rahmen	Option
Acrylfarben*	44 / 27 / 72 / 59 / 18 / 64

LEISTUNGEN	
Massagepunkte gesamt	44
Massagedüsen	32
Luftdüsen	12
Wasserfälle	-
Kopfstützen	3
Digitales Bedienfeld	•
Clean Water System	•
Verzinkter Metallrahmen	•
ABS-Platte	•
Energy Saving Cover	•
EcoSpa	Option
Nordic Insulation System	Option

UNTERHALTUNG	
2 LED-Strahler	Option
1 LED-Strahler	•
Bluetooth Audio	Option
Düsen Edelstahl	•
Programmierbares Touch Panel Wifi	Option

MASSAGEPUMPEN	
Wassermassage / Jetpumpe	1 x 1.800 W / 2,5 HP
Relax Impact Pump	400 W

FILTER UND HEIZUNG	
Silent Pump / Umwälzpumpe	250 W
Wasserehitzer	3.000 W
Filtertyp	Kartuschenfilter

ELEKTRISCHE SPANNUNG	
Leistung Option niedrige Stromstärke (W) / (A) 230 V	3.400 W / 14,8 A
Stromspannung	230 V / 400 V III

Ausführungstyp Becken

Acrylfarben



44 White

27 Silver

72 Cameo

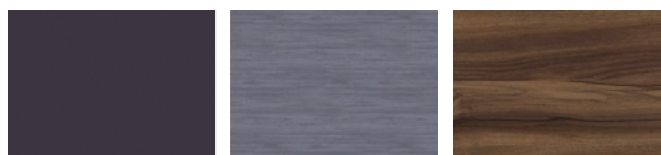


59 Sterling

18 Sand

64 Pearl Shadow

Verkleidungstyp Außenrahmen



Graphite

Thunder

Walnut



Butterfly



Zubehör



*Spa-Leiter NUSSBAUM
(oder Woodermax GRAPHIT)*



Wasserpflege-Kit

Im Rahmen unserer Bemühungen um ständige Verbesserungen behalten wir uns das Recht vor, ohne weitere Bekanntmachungen Änderungen an der Konstruktion und den technischen Daten vorzunehmen.

Caratteristiche tecniche

ref: 69122

Misure (±2 cm)	216 x 216 x 90
Posizioni (seduto / sdraiato)	5 (3 / 2)
Volume acqua (l)	930
Peso (vuota/piena) (kg)	327 / 1.257

Tipo di rivestimento del mobile esterno	Graphite Woodermax / Thunder Woodermax / Walnut Woodermax / Butterfly Woodermax
Senza rivestimento	Opzionale
Colori Acrilico*	44 / 27 / 72 / 59 / 18 / 64

PRESTAZIONI	
Totale punti di massaggio	44
Getti di massaggio	32
Bocchette di aria	12
Cascate d'acqua	-
Poggiatesta	3
Pannello di controllo digitale	•
Clean Water System	•
Struttura metallica galvanizzata	•
Base ABS	•
Energy Saving Cover	•
EcoSpa	Opzionale
Nordic Insulation System	Opzionale

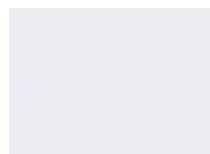
FINITURE	
2 luci LED	Opzionale
1 luci LED	•
Bluetooth Audio	Opzionale
Bocchette Inossidabile	•
Touch Panel Programmabile Wi-Fi	Opzionale

POMPE DI MASSAGGIO	
Massaggio ad acqua	1 x 1.800 W / 2,5 CV
Relax Impact Pump	400 W

FILTRAGGIO E RISCALDAMENTO	
Pompa di ricircolo	250 W
Scaldaacqua	3.000 W
Tipo di filtro	Cartuccia

CORRENTE ELETTRICA	
Potenza necessaria LOW AMP (W) / (A) a 230 V	3.400 W / 14,8 A
Tensione	230 V / 400 V III

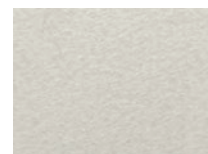
Materiale Vasca

Colori superficie acrilica

44 White



27 Silver



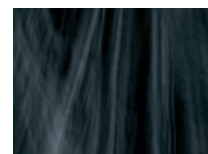
72 Cameo



59 Sterling



18 Sand

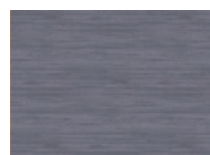


64 Pearl Shadow

Mobile in sintetico



Graphite



Thunder



Walnut



Butterfly

Accessori

*Escaletta NOCE
(o GRAFITE)**Kit di disinfezione*

Come parte della nostra politica di miglioramento continuo, ci riserviamo il diritto di modificare il design e/o le specifiche tecniche senza preavviso.